

Legend

Preferred Shoreline Route	Expressway / Highway	First Nation
Rice River Road Upgrade	Road	NAC Community
Community/Populated Place	Limited-use road Winter/Trail	Forested
Building	Major Winter Road	Wetland
Runway	Transmission Line	String Bog
Seaplane Facility	Watercourse	Water Body
		Provincial Park
		Wildlife Refuge
		Areas Of Special Interest (ASI)

Number of Respondents Indicating Activity/ Presence in Area

1	11 - 15
2 - 5	16 - 20
6 - 10	21 - 27

Note: This map is intended for internal use only. This map is intended for illustrative purposes only. Do not rely on this map for legal administrative purposes. Do not rely on it as being accurate indicator of routes, locations of features. Source: National Topographic Data Base (NTDB) 1:50,000. Government of Canada, Natural Resources Canada, Centre for Topographic Information 2009 Manitoba Land Information (MLI) 2009. Projection: Canada_Lambert_Conformal_Conic (GCS_North_American_1983)

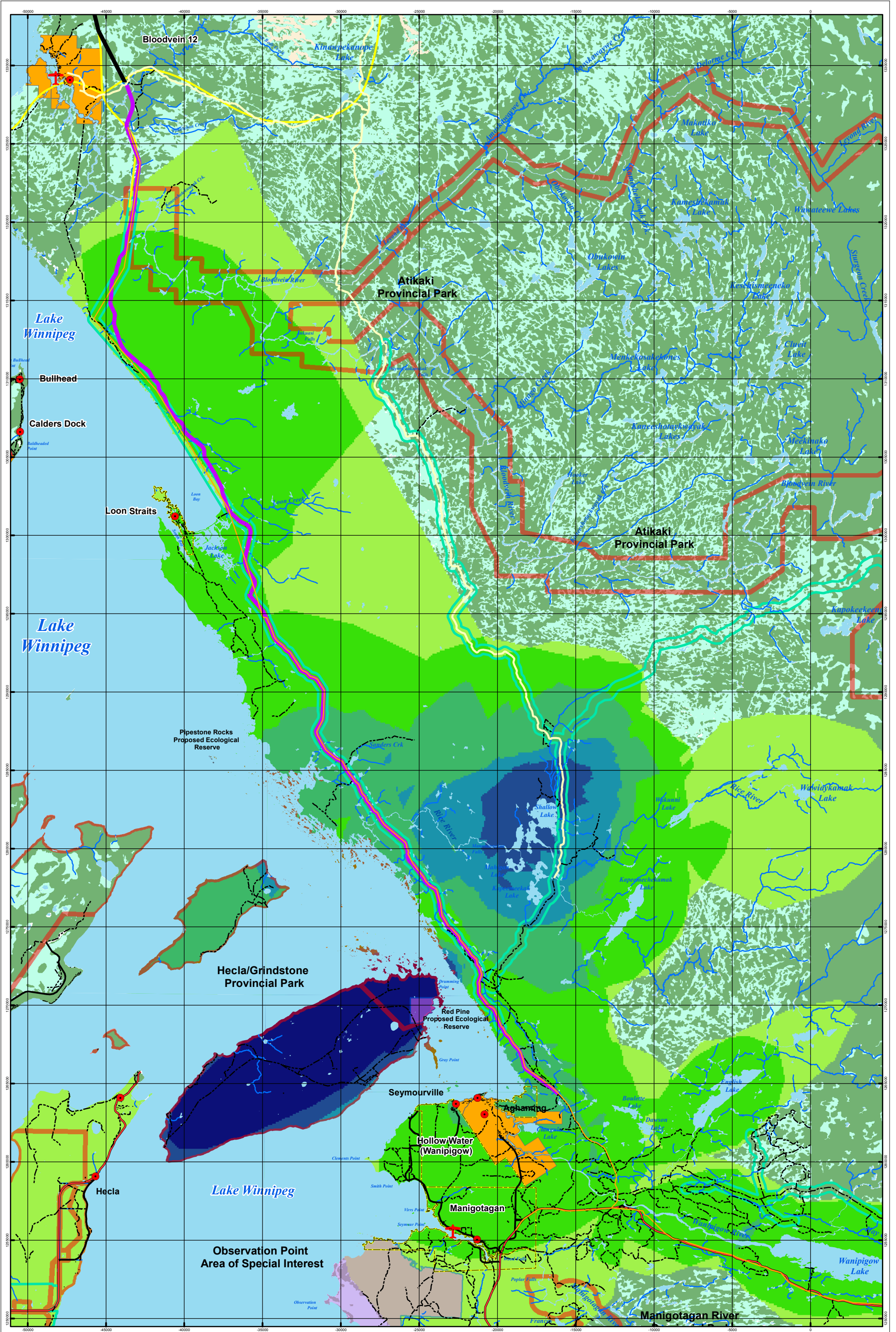
Scale: 1:220,000

4 2 0 4 8 Km

Manigotagan - Berens River Environmental Assessment/
East Lake Winnipeg (ESLW) Transportation Network Study
Traditional Ecological Knowledge Study (TEK)

**Manigotagan/Hollow Water Area
Berry Picking Areas**

Date: August, 2009	File Number: 333144	Sub Code: 0000
Figure:	HW 9	Rev. 0



Legend

1	11 - 15	Preferred Shoreline Route	Expressway / Highway	First Nation
2 - 5	16 - 20	Rice River Road Upgrade	Road	NAC Community
6 - 10	21 - 25	Community/Populated Place	Limited-use road Winter/Trail	Forested
		Building	Major Winter Road	Wetland
		Runway	Transmission Line	String Bog
		Seaplane Facility	Watercourse	Water Body
				Provincial Park
				Wildlife Refuge
				Areas Of Special Interest (ASI)

Note: This map is intended for internal use only. This map is intended for illustrative purposes only. Do not rely on this map for legal administrative purposes. Do not rely on it as being accurate indicator of routes, locations of features.
Source: National Topographic Data Base (NTDB) 1:50,000. Government of Canada, Natural Resources Canada, Centre for Topographic Information 2009 Manitoba Land Information (MLI) 2009. Projection: Canada_Lambert_Conformal_Conic (GCS_North_American_1983)

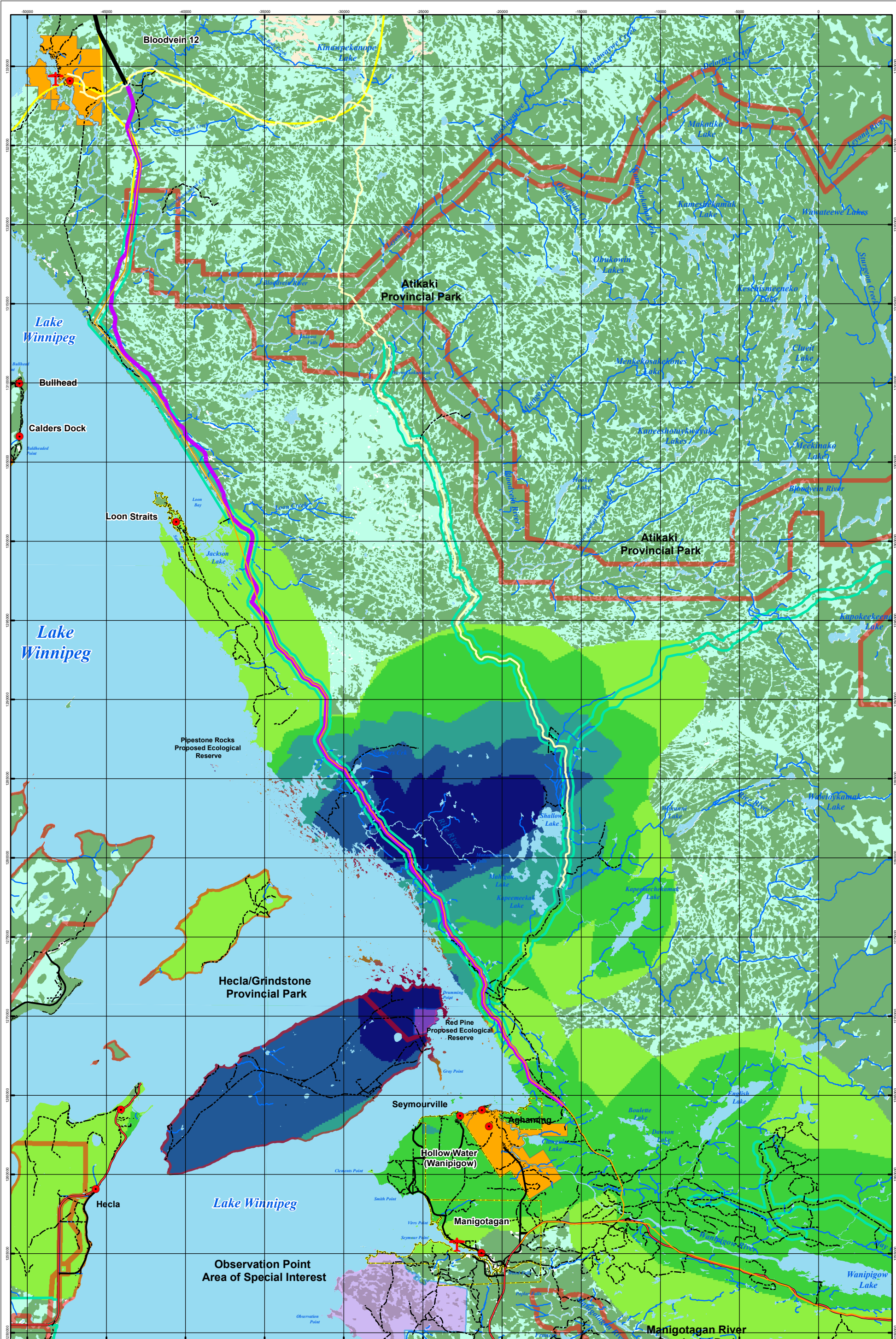
Scale: 1:220,000

4 2 0 4 8 Km

Manigotagan - Berens River Environmental Assessment/
East Lake Winnipeg (ESLW) Transportation Network Study
Traditional Ecological Knowledge Study (TEK)

**Manigotagan/Hollow Water Area
Special Gathering Areas**

Date: August, 2009	File Number: 333144	Sub Code: 0000
Figure:	HW 8	Rev. 0



Legend

Number of Responses Indicating Activity/Presence in Area

1
2 - 5
6 - 10
11 - 15
16 - 22

Preferred Shoreline Route
 Rice River Road Upgrade
 Community/Populated Place
 Building
 Runway
 Seaplane Facility
 Expressway / Highway
 Road
 Limited-use road Winter/Trail
 Major Winter Road
 Transmission Line
 Watercourse
 First Nation
 NAC Community
 Forested
 Wetland
 String Bog
 Water Body
 Provincial Park
 Wildlife Refuge
 Areas Of Special Interest (ASI)

Note: This map is intended for internal use only. This map is intended for illustrative purposes only. Do not rely on this map for legal administrative purposes. Do not rely on it as being accurate indicator of routes, locations of features.
 Source: National Topographic Data Base (NTDB) 1:50,000. Government of Canada, Natural Resources Canada, Centre for Topographic Information 2009 Manitoba Land Information (MLI) 2009. Projection: Canada_Lambert_Conformal_Conic (GCS_North_American_1983)

Scale: 1:220,000

4 2 0 4 8 Km

SNC-LAVALIN East Side Road AUTHORITY

Manigotagan - Berens River Environmental Assessment/
 East Lake Winnipeg (ESLW) Transportation Network Study
 Traditional Ecological Knowledge Study (TEK)
**Manigotagan/Hollow Water Area
 Burial/Spiritual Areas**

Date: August, 2009 File Number: 333144 Sub Code: 0000

Figure: **HW 7** Rev. **0**